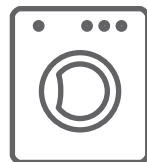


Amica

**OPERATING
INSTRUCTIONS
EN**

IO-WMS-0500
(04.2018/1)

**WMA510
(AWS510S)**



ONLY USE THE APPLIANCE WHEN YOU HAVE
READ AND UNDERSTAND THE OPERATING
INSTRUCTIONS

WASHING MACHINES

CONTENTS

ECOLOGY IN PRACTICE	3
BASIC INFORMATION	5
SAFETY AND GERMENT CARE LABELS	6
INSTALL THE APPLIANCE	17
PRODUCT DESCRIPTION	20
TROUBLESHOOTING	23
PRACTICAL TIPS ON WASHING	25
SPECIFICATIONS	29
PRODUCT FICHE	30



In accordance with European Directive **2012/19/EU** and Polish legislation regarding used electrical and electronic goods, this appliance is marked with the symbol of the crossed-out waste container.

This marking indicates that the appliance must not be disposed of together with other household waste after it has been used. The user is obliged to hand it over to waste collection centre collecting used electrical and electronic goods. The collectors, including local collection points, shops and local authority departments provide recycling schemes. Proper handling of used electrical and electronic goods helps avoid environmental and health hazards resulting from the presence of dangerous components and the inappropriate storage and processing of such goods.

ECOLOGY IN PRACTICE

For many years, Amica has consistently pursued pro-ecological policy. Concern for the environment is as important for us as the use of modern technology. That's why we focus on energy-efficient appliances of the highest energy efficiency class – A+, A++ and A+++.

The development of technology has enabled our factories to become more environmentally friendly - we use less and less water, electricity and less waste water and solid waste is generated in the production.

A lot of attention is paid to materials used in production. We strive to use only those that do not contain harmful substances and make recycling and safe disposal possible after use.



Dear customer!

Thank you for choosing an Amica product. For years we have delivered high-quality appliances, so that household chores become a real pleasure. Before being packaged and leaving the manufacturer, the appliance was thoroughly checked with regard to safety and functionality. We also endeavour to make sure that modern technology in Amica products always goes hand in hand with a unique design.

Before using the appliance, please carefully read these Operating Instructions. Follow these instructions to avoid improper use and ensure long and reliable operation of the appliance. Learn the principles of the safe use to avoid accidents.

Store these operating instructions in a safe place to use them for reference whenever needed. These Operating Instructions contain all the necessary information that will make the use of your Amica appliance simple and fun. We also encourage you to find out more about other Amica appliances.

We hope using your new appliance is a pleasure.

Amica

BASIC INFORMATION



This washing machine is intended for domestic use only to wash textiles and clothes designed to be machine washed in a detergent bath.

Before plugging the washing machine into the mains, remove the safety packaging and ensure the machine is level. The manufacturer reserves the right to introduce changes, which do not affect operation of the appliance.

USAGE

- Carefully read the instructions below before using the appliance.
- Never use the appliance outdoors or anywhere the temperature may fall below freezing.
- The machine should not be operated by children or anyone who has not read the instructions.



Temperatures below 0°C can damage the washing machine! In the event of the machine being stored or transported in sub-zero temperatures, it should be left to acclimatise in a temperature above 0°C for 8 hours before being used.

MANUFACTURER'S DECLARATION

The manufacturer hereby declares that this product meets the requirements of the following European directives:

- Low Voltage Directive, **2014/35/EU**,
- Electromagnetic Compatibility (EMC) Directive **2014/30/EE**,
- Eco-design Directive **2009/125/EU**,
- RoHS Directive **2011/65/EU**,


and has been marked with the CE symbol and issued with a declaration of compliance made available to market regulators.

<p>The risk of death!</p>	<p>This appliance should not be used by children under 8 years of age, persons with reduced physical or mental capabilities, and persons who do not have sufficient skills to use this type of appliance. Such persons should be offered proper supervision or instructions on safe handling of appliance and related risks. Children must not play with the appliance or perform any maintenance-related activities. Children under 3 years of age must be kept away from the appliance unless continuously supervised.</p>
<p>Risk of suffocation!</p>	<p>Children could get caught inside the appliance and get into a life-threatening situation.</p> <p>If you allow children to play with the packaging/film or parts of the package, they can get entangled or put packaging over their head and risk suffocation. Keep packaging/plastic film or parts of packaging out of reach of children.</p>
<p>Risk of poisoning!</p>	<p>Washing detergents and fabric softeners can cause poisoning if ingested. In the event of accidental ingestion, consult your doctor. Washing detergents and fabric softeners should be stored out of the reach of children.</p>

SAFETY AND GERMENT CARE LABELS

Risk of burns!	If laundry is washed at high temperature, door glass becomes hot. Prevent children from touching the hot door.
Eye/skin irritation!	Contact with detergents and softeners may cause eye or skin irritation. In case of eye/skin contact, thoroughly rinse eyes/skin to remove fabric detergent/softener. Washing detergents and fabric softeners should be stored out of the reach of children.
Risk of electric shock. Risk of fire/damage to property/appliance!	If the appliance is not correctly installed, it may be dangerous. Make sure that: Mains voltage corresponds to the voltage indicated on the appliance nameplate (identification plate) The current load and required fuse protection are specified on the nameplate. The appliance is connected to AC source only through a properly installed and grounded wall socket in accordance with national standards.

SAFETY AND GERMENT CARE LABELS

Risk of electric shock. Risk of fire/damage to property/appliance!	The power cord and the grounded wall socket fit together and the grounding system has been properly installed.
	Power cord cross section is sufficient.
	Power plug is always accessible.
	If a miniature circuit-breaker is used, always use a circuit-breaker with the following designation:  This symbol is the only way to make sure that all the necessary requirements have been met.
Risk of electric shock. Risk of fire/damage to property/appliance!	If the power cord is modified or damaged, it may result in electric shock, short circuit or fire due to overheating. The power cord must not be kinked, crushed or modified or come in contact with any heat source.

SAFETY AND GERMENT CARE LABELS

Risk of fire/damage to property/appliance!	The use of extension cords or splitters may result in fire due to overheating or short circuit. Connect the appliance directly to a properly grounded wall socket. Do not use extension cords, splitters or power strips.
Health risk / risk of damage to property/appliance!	The appliance may vibrate or displace while in use, potentially causing injury or property damage. Set the appliance on a clean, level and hard surface using a level spirit.
	If any protruding items are caught by the appliance (e.g. doors) when trying to lift or move it, the item may come off and cause injury. Do not grasp any protruding parts of the appliance to move it.
Risk of injury!	The appliance is very heavy. Lifting may cause injury. Do not lift this appliance by yourself.

SAFETY AND GERMENT CARE LABELS

Risk of injury!	<p>This appliance has sharp edges that can cause a hand injury. Do not hold the appliance by sharp edges. Only lift the appliance after you put on the gloves.</p>
	<p>If the hoses or electrical cables are not routed properly, you can trip and sustain an injury. Rout hoses and cables so that they do not constitute a tripping hazard.</p>
Important! Damage to property/appliance	<p>If the water level is too high or too low, the appliance may not work properly, which can cause damage to property/appliance. Make sure that water is supplied under pressure of minimum 100 kPa (1 bar) and not exceeding 1000 kPa (10 bar).</p>
	<p>If the water supplying hoses have been modified or damaged, this can cause damage to property/appliance. The water supply hoses must not be kinked, crushed, modified or cut.</p>
	<p>The use of third-party hoses to connect the appliance to water supply can cause damage to property or the appliance.</p>

SAFETY AND GERMENT CARE LABELS

<p>Important! Damage to property/appliance</p>	<p>Use only hoses supplied with the appliance, or the original hoses up designed for the appliance.</p> <p>The appliance is secured for transport with transit bolts. If you don't remove transit bolts before using the appliance, the appliance may be damaged. Remove all transit bolts before using the appliance for the first time. Make sure you keep transit bolts in a safe place for future use. If the appliance will be transported, to avoid any damage, you must reinstall the transit bolts.</p>
<p>Risk of explosion/fire hazard!</p>	<p>Laundry washed with detergents that contain solvents and thinners pose a risk of explosion in the drum.</p> <p>Thoroughly rinse laundry with water before washing in the washing machine.</p>

SAFETY AND GERMENT CARE LABELS

Risk of poisoning!	Cleaning agents containing solvents may give off poisonous vapours. Do not use cleaning agents containing solvents.
Risk of injury!	Do not lean against/sit on open appliance door as this can lead to the appliance tipping over. Do not lean against the open door of the appliance.
	Climbing on the appliance may cause the worktop to break or collapse and lead to an injury Do not climb on the appliance.
	Reaching into the drum while is still rotates could injure your hand. Wait until the drum has come to a standstill.
Risk of scalding!	When washing at high temperature, there is a risk of scalding as a result of contact with hot water and detergent (e.g. when you drain the water into the sink). Do not put your hands in hot water with detergent solution.

SAFETY AND GERMENT CARE LABELS

Eye/skin irritation!	<p>Fabric detergents and softeners may splash, if the detergent drawer remains open during operation.</p> <p>In case of eye/skin contact, thoroughly rinse eyes/skin to remove fabric detergent/softener.</p> <p>In the event of accidental ingestion, consult your doctor.</p>
Important! Damage to property/appliance	<p>If the amount of laundry in the washing machine exceeds the maximum load, it may not operate properly or cause damage to property or the appliance.</p> <p>Do not exceed the maximum load capacity of dry laundry.</p> <p>Do not exceed the maximum load capacity for individual wash programmes.</p> <p>Adding too much detergent or fabric softener may cause damage to property or the appliance.</p> <p>Use fabric detergent/softener according to the manufacturer's instructions.</p>

<p>The risk of death!!</p>	<p>The appliance is powered by electricity. Touching live elements poses a risk of electric shock. Therefore, remember:</p>
	<p>Turn off the appliance: Unplug the appliance from the wall outlet.</p>
	<p>We never grab the plug with wet hands.</p>
	<p>When pulling the plug, always hold the plug, not the power cord, because this can damage the power cord.</p>
	<p>Do not make any technical modifications to the appliance or its components.</p>
	<p>Any repairs or other work on the appliance must only be performed by our service facility or by an electrician. The same applies to replacing the power cord (if necessary).</p>
	<p>You can order a spare power cord in our service centres.</p>

SAFETY AND GERMENT CARE LABELS

<p>Risk of poisoning!</p>	<p>Cleaning agents containing solvents may give off poisonous vapours.</p> <p>Do not use cleaning agents containing solvents.</p>
<p>Risk of electric shock / damage to property / appliance!</p>	<p>If water penetrates into the appliance, it may cause a short circuit.</p> <p>Never use pressure washer or steam cleaner to clean the appliance.</p>
<p>Health risk / risk of damage to property/appliance!</p>	<p>The use of third-party spare parts and accessories is dangerous and may cause injury, damage to property or appliance.</p> <p>For safety reasons, use original spare parts only.</p>
<p>Important! Damage to property/appliance</p>	<p>Fabric cleaners, impregnating agents, stain removers, pre-wash agents, etc. may damage the appliance outer surface.</p> <p>Therefore, remember:</p>

SAFETY AND GERMENT CARE LABELS

Important! Damage to property/appliance	Make sure there is no contact with the appliance surface.
	Clean the appliance with a damp cloth only.

UNDERSTANDING THE SYMBOLS ON CLOTHES LABELS

Washing				
	boil at 90°C	normal wash at 60°C	normal wash at 40°C	Do NOT wash!
	delicate		handwash	
Chemical cleaning				
	all solvents	all except TRI	petrol only	NO Dry clean!
Tumble dryer				
	normal	low	high	Do NOT dry!
Ironing				
	110°C	150°C	200°C	Do NOT Iron



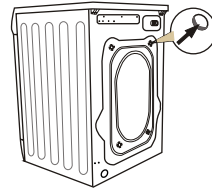
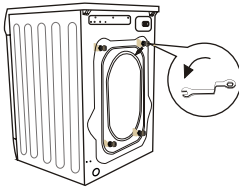
Always pay attention to the symbols on garment labels when choosing a washing programme.

INSTALL THE APPLIANCE

1

Remove the transit bolts

(keep the bolts for future use, e.g. when moving house).



- unscrew the 4 transit bolts with a spanner;
- remove the rubber and plastic transport brackets from the sockets along with the washers and bolts.

- stop up the holes with the stoppers enclosed in the accessories bag.

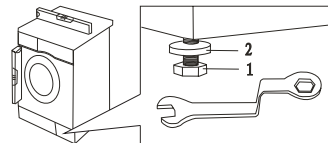
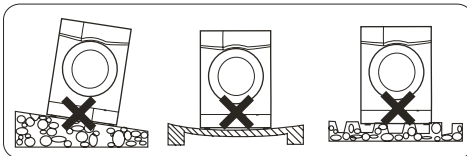


Caution: the transit bolts **MUST** be removed before the washing machine is used!

2

Position and level the washing machine

- place the washing machine on a solid, level surface,
- loosen the plastic washer (2)
- Level the appliance by adjusting the legs (1)
- lock with washers (2)

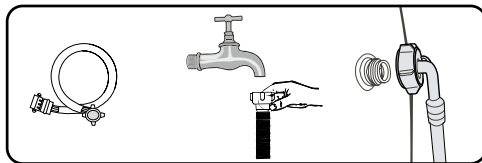


After positioning and levelling the appliance, check that it is stable by pressing down each corner and ensuring it does not move!

3

Connect the water supply

- Use only the new hoses supplied with the machine. Do not re-use hoses.



- A supply hose with seals is inside the drum of the machine.
Water pressure min 0.05 MPa (0.5 bar), max 1 MPa (10 bar).

- 1) after connecting, make sure the hose is not twisted
- 2) after connecting the hose and the valve, check they are sealed tight
- 3). regularly check the condition of the hose.

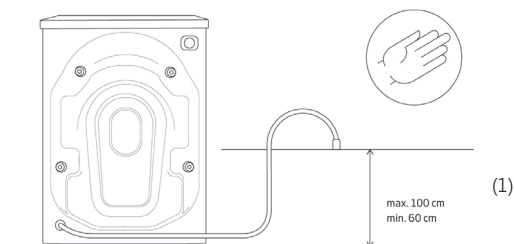


Supply the machine with cold water only.

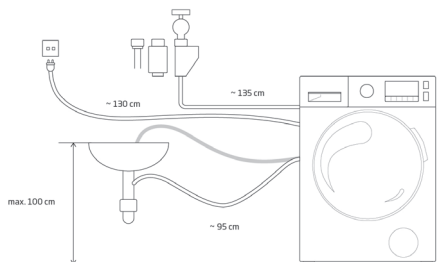
4

Water drain

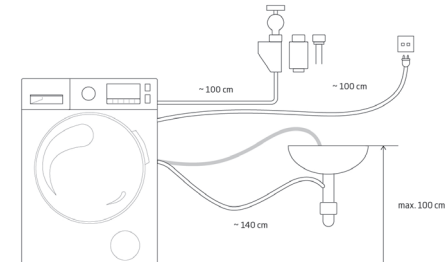
- The drain hose is at the back of the machine. Fix the drain hose so that it does not move while the washing machine is in operation. If necessary, use the elbow (1).



Connection on the left

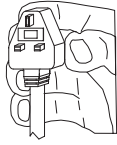
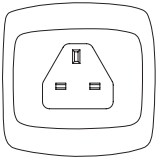


Connection on the right



5

Connect to power supply



- Electrical wall outlet where the appliance is connects must be in a visible and accessible place,
- Only plug the appliance into a properly installed socket with an earthing pin,
- Do not use an extension cord to connect the appliance,
- in the event of the power cord being damaged, it must be replaced by an authorised service technician,
- the electrical system to which the appliance is to be connected must be protected with a 10 A fuse.

Prepare to wash:

- Small items such as coins, paper clips, needles, etc., may damage the laundry and the washing machine, you should therefore follow a few important recommendations:
 - 1). Empty pockets
 - 2). Remove all metal items
 - 3.) Delicate items such as bras or stockings should be washed in protective mesh laundry bag
 - 4). Close zippers and fasten buttons

FEATURES AND COMPONENTS

DESCRIPTION OF THE APPLIANCE



1. Detergent drawer
2. Drum
3. Control Panel
4. Door handle
5. Pump filter cover

Accessories:



Transport hole plug

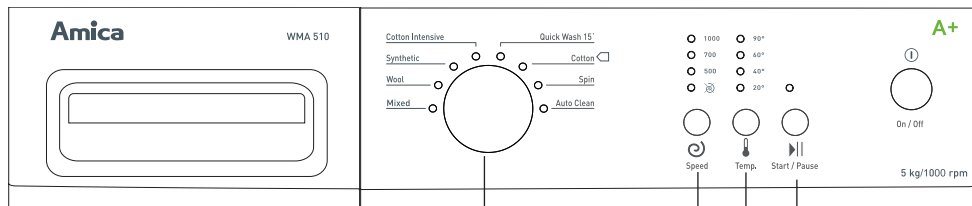
Supply hose cold water

Supply hose hot water (optional)

Drain hose support (optional)

User manual

DISPLAY AND CONTROL PANEL



1

Programme selector dial

- Choose the appropriate wash programme as required, depending on the degree of soil, and type and amount of laundry loaded, which ensures better results and more effective washing. Once the wash programme has started, turning the programme selector dial to another position does not change the settings of previously selected programme.

2

Spin Speed button

- Press this button to set the spin speed when water is being pumped out of the washing machine. Press the button to change the setting.

3

Temperature button

- This button allows the washing temperature to be set. Press this button to display water temperature settings available for a given programme or an option for washing in cold water (no heating). When washing in cold water all indicator lights are off.

4

Start/Pause button

- Press [Start/Pause] to start or pause a programme. When the washing machine operates, START/PAUSE indicator light is on. When you PAUSE a programme, START/PAUSE indicator light is off.
The PAUSE mode can be used to soak the laundry. Once the selected programme has started wait for about 10 minutes and then press the START/PAUSE button. When the laundry is soaked as required, press the START/PAUSE button again to resume the programme. Soaking will improve washing results for heavily soiled laundry.

Acoustic Signal On/Off

- To enable this function, hold the Temperature button for approximately 3 seconds. An acoustic signal will confirm function on/off. In order to re-enable the function, press and hold the button for approximately 3 seconds. Then this setting will be saved until the next change.

USING THE APPLIANCE

1

Select Programme

- Set the programme selector knob to the desired programme (see the table further on).
- Change spin speed or temperature to modify the programme to your individual needs.
- Press the Start/ Pause button.

2

End of the wash cycle

- When a cycle is completed, the START/PAUSE indicator will flash and an acoustic signal will sound (if enabled).
- Open the door and remove the laundry.
- Turn off the appliance if you have finished using it.

3

Cancel or modify programme

- Press Start/Pause button for about 3 seconds to interrupt the programme. Then select the desired wash programme.

TROUBLESHOOTING

The washing machine indicates error codes to help locate minor operating faults and identify their cause. An error is indicated by LEDs on the control panel (20°, 40°, 60°, 90°). In addition to error indication the washing machine beeps and pauses operation. This is indicated by a flashing LED above the Start/Pause button.

Error Code				Reason	Solution
Temp. 20°	Temp. 40°	Temp. 60°	Temp. 90°		
☼	●	●	●	Door is not closed properly	Check that the door is locked; check that laundry is not jammed in the door.
●	☼	●	●	Low pressure, no water in the drum	Open the water valve, check the water inlet hose and filter, check water pressure
☼	☼	●	●	Water does not drain properly	Check water drain pump and filter.
				Others	Try to restart or contact the Service Centre.

Amica

 Service Help Line

For the UK: please call
01949 862012

For Ireland: please call
0818 46 46 46 (non-geographic number)
or **01 88 2010** (standard rate call)



● Off
☼ Flash

MAINTENANCE AND CLEANING

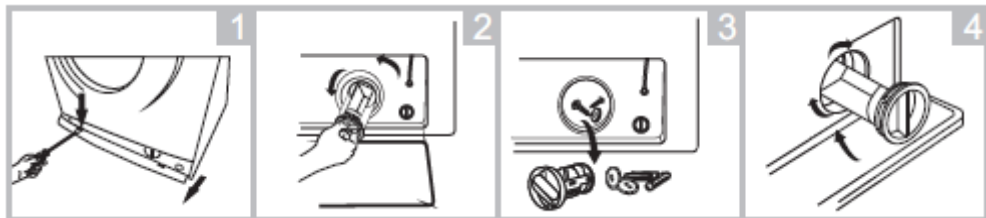


Never clean the appliance body or plastic parts using solvents or harsh, abrasive detergents (e.g. washing powders or creams)! Use mild liquid detergents and soft cloths only. Do not use sponges.

1

Clean the pump filter

- Clean the pump filter every 20 washes or so. Neglecting to clean the filter may result in problems with draining water from the appliance!

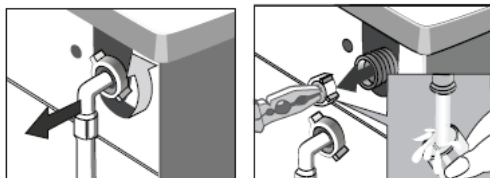


- 1). open the service filter,
- 2). open the filter by turning to the counter clockwise,
- 3). remove and clean the filter,
- 4). close the lower cover cap.

2

Clean the water supply valve

- Replace the filter following the procedure in reverse order.

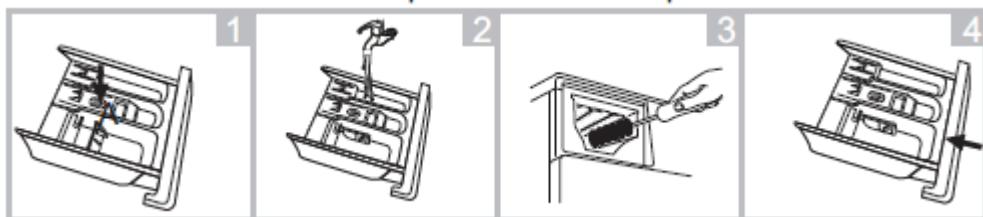


- 1). unscrew on the water supply hose,
- 2). use forceps to grasp the filter mesh pin,
- 3). remove and clean the filter, preferably using a brush.

3

Clean the detergent drawer

- Should be cleaned at least once a month.



- 1). pull out the detergent drawer.
Press down the tab and completely remove the drawer.
- 2). rinse under running water, clean with a brush or a piece of fabric,
- 3). clean inside the recess with an old toothbrush,
- 4). replace the drawer.

PRACTICAL TIPS ON WASHING

DETERGENTS AND LAUNDRY ADDITIVES



It is recommended to use a general-purpose laundry detergent powder or liquid for the full range of temperatures according to the manufacturer's instructions on the detergent packaging.

1

Detergents

- Pour the detergent into the drawer compartment marked **II**
- Pour the pre-wash detergent into the drawer compartment marked **I**

2

Liquid detergents

- Install the tab supplied in the compartment **II**
- Pour liquid detergent into the drawer compartment marked **II**

3

Fabric softeners added to the rinse

- Pour the fabric softener into the drawer compartment marked **⊗**
- Do not exceed the maximum level marked on the drawer compartment. This detergent will be used for the final rinse.



For washing whites it is recommended to use the washing powder. Liquid detergents do not contain bleach. Do not use rinse aid with white laundry, as this may cause yellowing of laundry.

FIRST WASH

- Before washing for the first time, put the appliance through one high temperature cycle without a load, according to the following procedure:
 - 1). connect the washing machine to the power supply,
 - 2). open the water valve,
 - 3). set the programme selector dial to washing at high temperature, add a suitable detergent and press Start/Pause.

SOIL

1

Stubborn stains

- Before washing underwear, apply an additional stain remover according to the instructions for use.

2

Heavy soil

- in order to achieve a better result, wash less laundry,
- add more detergent.
- Rinse the washing machine after washing heavily soiled garments (e.g. work clothes) or clothing that loses fibres. To do this, run the wash cycle at 60°C, for example Cotton or Synthetics without any load.

3

Light soil

- See Conservation.

CONSERVATION

Reduce energy and water consumption

- Garments which are only lightly soiled should be washed on the Rapid Wash setting.
- For most programmes, the washing machine detects load. For partial load, when using the Ultra short programme, the appliance will reduce water and energy consumption and shorten the wash cycle.

WATER HARDNESS

- Hard water causes scale deposition. Information about water hardness is available from the nearest water works. We recommend that you use water softener for each washing.

POWER OUTAGE (PROGRAMME MEMORY)

- Power outage or unplugging the appliance does not cancel the set programme. The programme is memorised and resumes when power is restored. Do not open the appliance doors during a power outage.

LOAD

- Maximum drum capacity 5 kg.
- Load the laundry into the drum according to the following instructions:

- 1). cotton, denim, children's clothes - max full drum (do not force clothes into the drum as this will reduce the quality of the wash),
- 2). Synthetics - max $\frac{1}{2}$ of the drum,
- 3). wool, silk, delicate fabrics - $\frac{1}{3}$ of the drum.



Do not overload the appliance. Overloading the appliance may damage the clothes being washed! If you overload the appliance the OVL is shown appears on the display – remove excess laundry from the drum and restart the washing machine. The maximum load amounts depending on the programme are given in table of programmes.

LOAD DISTRIBUTION CONTROL

- The appliance features load distribution control system. Before spinning, this checks the distribution of clothes inside the drum. In the event that too great an imbalance is detected, the system makes several attempts to rearrange the clothes inside the appliance. Sometimes these attempts to distribute the load are not successful. Problems may be caused by terrycloth robes washed together with other types of laundry, such as bed sheets that formed a bundle around other items of laundry.
- The system may then respond in two ways:
 - 1). accept the uneven distribution of garments and reduce spin speed,
 - 2). cancel the spinning.

In either case, after washing cycle is finished open the appliance door, remove the laundry by hand, close the door and select the spin setting again.

DOOR LOCK

- The washing machine is equipped with a lock which prevents the door from being opened during wash cycle. Once a wash cycle is complete, the door lock is automatically released. In order to open the door during the wash program, press PAUSE button and wait to unlock the door.



If the temperature inside the drum is high, the door may remain blocked until the water temperature has dropped below 60°C.



Before opening the door of the washing machine check whether there is water in the drum.

DELICATE FABRICS

1

Select Programme

- Select the appropriate wash programme: Synthetics, Wool.

2

Load

- Avoid overloading the washing machine – the maximum load is 1/3 kg for delicate fabrics, see "Loading."

ADD DETERGENT

1

Not enough detergent

- the laundry turns grey, lumps of fat form, lime scale is deposited.

2

Too much detergent

- A lot of foam, ineffective washing, detergent incompletely rinsed from fabrics.

SPECIFICATION

Type	WMA510 (AWS510S)
Rated voltage	220-240V / ~50Hz
Rated power	2100 W
Overcurrent protection	10 A
Drum capacity	max. 5 kg
Water pressure	min. 0.05 MPa (0.5 bar) max. 1 MPa (10 bar)
Dimensions Depth/Height/Breadth	850/595/470 [mm]
Weight	54 kg
Meets the requirements of the following EU regulations	EN-60456 standard.

Testing for label information in accordance with EN 60456 using the standard cotton wash programmes:

- Cotton 60°C at full load
- Cotton 60°C at partial load
- Cotton 40°C at partial load

average annual water consumption is 8250 l/year weighted average electricity consumption is 169 kWh/year

PRODUCT SHEET

(According to the Commission delegated Regulation (EU) No 1061/2010 of 28 September 2010 supplementing Directive of the European Parliament and of the Council 2010/30/EU with regard to energy labelling of household washing machines and Commission Regulation (EU) No 1015/2010 of 10 November 2010 implementing Directive 2009/125/EC of the European Parliament and of the Council with regard to eco-design requirements for household washing machines).

Supplier's name or trade mark	Amica S.A.
Type	WMA510 (AWS510S)
Energy efficiency class ^{1) 2)}	5.0 kg
Annual weighted average energy consumption AE_t ³⁾	A+
Annual weighted average energy consumption AE_c ³⁾	169 kWh/year
Energy consumption of the standard cotton programme:	
- at 60°C, full load $W_{t,60}$	0.87 kWh
- at 60°C, partial load $W_{t,60/2}$	0.74 kWh
- at 40°C, partial load $W_{t,40/2}$	0.61 kWh
Power consumption in the off-mode P_o	0.5 W
Power consumption in standby mode P_i	0.5 W
Annual weighted average water consumption AW_c ⁴⁾	8250 l/year
Energy consumption of the standard cotton programme:	
- at 60°C, full load $W_{t,60}$	48 l
- at 60°C, partial $W_{t,60/2}$	31 l
- at 40°C, partial $W_{t,40/2}$	31 l
Spin-drying efficiency class ²⁾	C
Residual moisture content D	61 %
Maximum spin speed attained ²⁾	1000 rpm
Duration of the "standard 60°C cotton programme" at full load	223 min
Duration of the "standard 60°C cotton programme" at partial load	182 min
Duration of the "standard 40°C cotton programme" at partial load	179 min
Noise Level:	
- during the wash cycle	Noise 58 dB (A) re 1 pW
- during the spin cycle	Noise 74 dB (A) re 1 pW
Equipment designed for fitting	no

1) Energy efficiency class on a scale from A+++ (more efficient) to D (less efficient).

2) For a standard Cottons 60°C and 40°C wash programme at full and partial load.

3) Estimated weighted annual energy consumption based on 220 standard wash cycles for Cottons 60°C and 40°C at full and partial load and energy consumption in power saving modes. Actual energy consumption depends on how the appliance is used.

4) Estimated weighted annual water consumption based on 220 standard wash cycles for Cottons 60°C and 40°C at full and partial load. Actual water consumption depends on how the appliance is used. This household washing machine is equipped with a power management system, and, at the end of the programme, it automatically reverts to off-mode. Period of time in standby mode is less than 1 minute.



Amica

 Service Help Line

For the UK: please call
01949 862012

For Ireland: please call
0818 46 46 46 (non-geographic number)
or **01 88 2010** (standard rate call)