

Amica

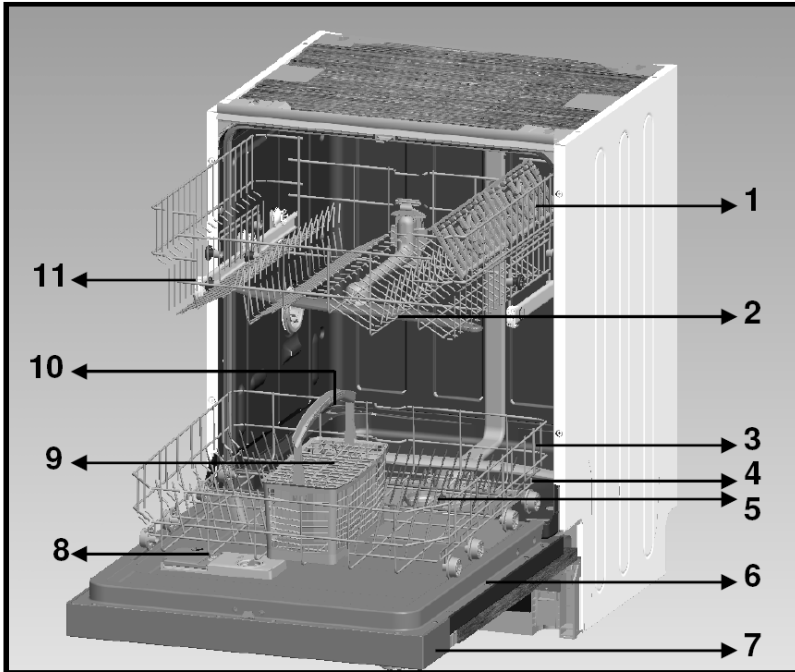
Dishwasher ZZV 634W UK

Instruction manual

Sticker with serial number of appliance

CONTENTS

Programme Selection and Operating the Machine	2
<i>Safety information and Recommendations</i>	4
<i>Installing the machine</i>	9
• Positioning the machine	9
• Water connections	9
• Water inlet hose	9
• Water outlet hose	10
• Electrical connection.....	10
<i>Preparing the machine for use</i>	11
• The importance of water decalcification	11
• Filling with salt	11
• Testing strip.....	12
• Adjusting salt consumption.....	13
• Detergent usage	14
• Filling the detergent compartment.....	14
• Combined detergent	14
• Filling with rinse aid and making the setting.....	15
<i>Loading your dishwasher</i>	16
• Dish rack	16
• Alternative basket loads	18
Programme descriptions	19
• Programme items	19
• Operating the Machine	20
• Programme Monitoring	20
• Changing the Programme	20
• Cancelling the Programme.....	21
• Switching the Machine Off	21
<i>Maintenance and Cleaning</i>	22
• Filters	22
• Spray arms	23
• Hose filter	23
Failure codes and what to do in case of failure	24
<i>Practical and useful information</i>	26

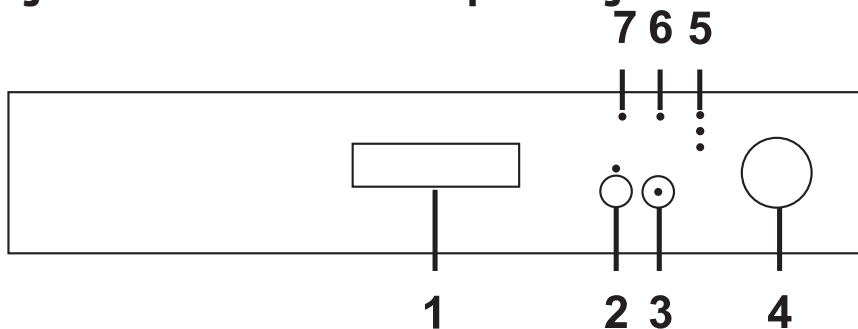


- | | | | |
|----|-------------------------|-----|-----------------------------------|
| 1. | Upper basket with racks | 7. | Control Panel |
| 2. | Upper spray arm | 8. | Detergent and rinse-aid dispenser |
| 3. | Lower basket | 9. | Cutlery basket |
| 4. | Lower spray arm | 10. | Salt dispenser |
| 5. | Filters | 11. | Upper basket track latch |
| 6. | Rating plate | | |



12. **Active drying unit** : This system provides better drying performance for your dishes.

Programme Selection and Operating the Machine



1. Door Handle

Use the door handle to open/close the door of your machine.

2. Delay and Half Load Button

Thanks to the delay function in your machine, by using the Delay key you can delay the start-up time of the programme for 3-6-9 hours.

Upon pressing the delay key 3h washing light will be lit. If you keep on pressing the Delay key, 6h-9h lights will be lit respectively on your each press. You will cancel the delay if you press the delay key again after the 9h light is lit.

You will activate the delaying function once you select the delay time and then press the Start/Pause key. The countdown will be triggered after that moment. If you would like make any change in the delay time after the delaying function is enabled, you can set the new time with the button number 2 by pressing the Start/Pause key. Press the Start/Pause key again to activate it.

Once the delay time is terminated, the delay light will go off and the programme you have selected will start operating.

If you press Delay key while the 9h delay light is on, the delay light will go off. If you press Start/Pause key while the delay lights are turned off, the programme you

have selected will start without delay.

If the user switches the programme selection button to off position after enabling the delay time and the programme is started, the activated delay function will have been cancelled.

The half load function will be activated and the half load LED will be lit if the key number 2 is pressed and hold for 3 seconds.

Press the key number 2 for 3 seconds to cancel the half load function. The half load LED will go off.

Thanks to the half load function in your machine, you can shorten the durations of the programmes that you have selected and reduce the energy and water consumption. (see programme listing p 19)

NOTE: If you have used any extra function (such as delay or half load) in the washing programme that you last used and then cut off the energy of the machine and re-energised it, that function you have selected will not be active in the next washing programme. If you would like to use this feature in the programme you have newly selected, you may select the desired functions once again.

3. Start/Pause Key

When you press the Start/Pause key, the programme you have selected with the programme selection button will start operating and the washing light will be lit. After the programme is started, the Start/Pause light will go off.

You can press Start/Pause key if you would like to stop the programme. In such case, the light on the Start/Pause key will blink. You can allow the programme to resume by pressing the Start/Pause key again.

4. On/Off Programme Selection Button

When in off position, it cuts off the energy of the machine. In other positions, the machine is energised and programme selection can be performed.

5. Programme Monitoring Lights

You can monitor the programme flow with the programme lights on the control panel.

- **Wash**
- **Dry**
- **End**

6 Salt Missing Warning Indicator

Check the salt missing warning indicator light on the display to have an idea whether the softening salt in your machine is enough. When salt missing warning indicator is lit, fill the salt compartment.

7. Rinse Aid Missing Warning Indicator

Check the rinse aid missing warning indicator light on the display to have an idea whether the amount of the rinse aid in your machine is enough. When rinse aid missing warning indicator is lit, fill the rinse aid compartment.

IMPORTANT SAFETY INFORMATION

! WARNING! When using your dishwasher, follow the precautions listed below:

- This appliance is intended to be used in household and similar applications such as:
 - staff kitchen areas in shops, offices and other working environments;
 - farm houses;
 - by clients in hotels, motels and other residential type environments;
 - bed and breakfast type environments.
- This appliance can be used by children aged from 8 years and above and persons with reduced physical, sensory or mental capabilities or lack of experience and knowledge if they have been given supervision or instruction concerning use of the appliance in a safe way and understand the hazards involved. Children shall not play with the appliance. Cleaning and user maintenance shall not be made by children without supervision. (For EN60335-1)
- This appliance is not intended for use by persons (including children) with reduced physical, sensory or mental capabilities, or lack of experience and knowledge, unless they have been given supervision or instruction concerning use of the appliance by a person responsible for their safety. (For IEC60335-1)
- This appliance is for indoor use only, for household use only.
- To protect against the risk of electrical shock, do not immerse the unit, cord or plug in water or other liquid.
- Please unplug before cleaning and maintenance the appliance.
- Use a soft cloth moisten with mild soap, and then use a dry cloth to wipe it again.



EARTHING INSTRUCTIONS

- This appliance must be earthed. In the event of a malfunction or breakdown, earthing will reduce the risk of an electric shock by providing a path of least resistance of electric current. This appliance is equipped with a cord having an equipment-earthing conductor and a grounding plug.
- The plug must be plugged into an appropriate outlet that is installed and earthed in accordance with all local codes and ordinances.
- Improper connection of the equipment-earthing conductor can result in the risk of an electric shock.
- Check with a qualified electrician or service representative if you are in doubt whether the appliance is properly grounded.
- Do not modify the plug provided with the appliance; If it does not fit the outlet.
- Have a proper outlet installed by a qualified electrician.
- Do not abuse, sit on, or stand on the door or dish rack of the dishwasher.
- Do not operate your dishwasher unless all enclosure panels are properly in place.
- Open the door very carefully if the dishwasher is operating, there is a risk of water squirting out.
- Do not place any heavy objects on or stand on the door when it is open. The appliance could tip forward.
- When loading items to be washed:
 - 1) Locate sharp items so that they are not likely to damage the door seal;
 - 2) Warning: Knives and other utensils with sharp points must be loaded in the basket with their points down or placed in a horizontal position.

- Check that the detergent powder is empty after completion of the wash cycle.
- Do not wash plastic items unless they are marked dishwasher safe or the equivalent.
- For plastic items not so marked, check the manufacturer's recommendations.
- Use only detergent and rinse additives designed for an automatic dishwasher.
- Never use soap, laundry detergent, or hand washing detergent in your dishwasher.
- Children should be supervised to ensure that they do not play with the appliance.
- The door should not be left open, since this could increase the risk of tripping. If the supply cord is damaged, it must be replaced by the manufacturer or its service agent or a similarly qualified person in order to avoid a hazard.
- During installation, the power supply must not be excessively or dangerously bent or flattened.
- Do not tamper with controls.
- The appliance is to be connected to the water mains using new hose sets and that old hose-sets should not be reused.
- The maximum number of place settings to be washed is 6,8,9,10,12,14.*
- The maximum permissible inlet water pressure is 1MPa.
- The minimum permissible inlet water pressure is 0.04 MPa.

Disposal

- Dispose of the dishwasher packaging material correctly.
- All packaging materials can be recycled.
- Plastic parts are marked with the standard international abbreviations:
 - PE — for polyethylene, e.g. sheet wrapping material
 - PS — for polystyrene, e.g. padding material
 - POM—polyoxymethylene, e.g. plastic clips
 - PP — polypropylene, e.g. Salt filler
 - ABS—Acrylonitrile Butadiene Styrene, e.g. Control Panel .



⚠ WARNING!

- Packaging material could be dangerous for children!
- For disposing of package and the appliance please go to a recycling centre. Therefore cut off the power supply cable and make the door closing device unusable.
- Cardboard packaging is manufactured from recycled paper and should be disposed in the waste paper collection for recycling.
- By ensuring this product is disposed of correctly, you will help prevent potential negative consequences for the environment and human health, which could otherwise be caused by inappropriate waste handling of this product.
- For more detailed information about recycling of this product, please contact your local city office and your household waste disposal service.
- **DISPOSAL:** Do not dispose this product as unsorted municipal waste. Collection of such waste separately for special treatment is necessary.

Technical specifications

Capacity	12 place settings
Height	820 mm - 870mm
Width	598 mm
Depth	570 mm
Net Weight	41 kg
Electricity input	220-240 V, 50 Hz
Total Power	1900 W
Heating Power	1800 W
Pump Power	85 W
Drain Pump Power	57,5 W
Water supply pressure	0.03 MPa (0,3 bar)-1 MPa (10 bar)
Current	10 A

Conformity with the standards and Test data /

EU Declaration of Conformity

This product meets the requirements of all applicable EU directives with the corresponding harmonised standards, which provide for CE marking.

Important Note for User:For softcopy of this user manual, please contact following address:

"dishwasher@standardtest.info".In your e-mail, please provide the model name and serial number (20 digits) which you can find on the appliance door.

INSTALLING THE MACHINE

Positioning the machine

When determining the place to put your machine on, take care to choose a place where you can easily load and unload your dishes.

Do not put your machine in any location where there is the probability for the room temperature to fall below 0°C.

Before positioning, take the machine out of its packaging by following the warnings located on the package.

Position the machine close to a water tap or drain. You need to site your machine, taking into consideration that its connections will not be altered once they are made.

Do not grip the machine by its door or panel in order to move it.

Take care to leave a certain clearance from all sides of the machine so that you can comfortably move it back and forth during cleaning.

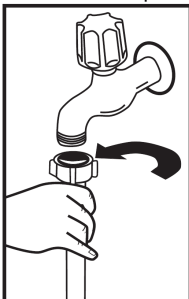
Make sure that the water inlet and outlet hoses do not get squeezed while positioning the machine. Also, make sure that the machine does not stand on the electrical cable.

Adjust the machine's adjustable feet so that it can stand level and balanced. Proper positioning of the machine ensures problem-free opening and closing of its door.

If the door of your machine does not close properly, check if the machine is stable on the floor it stands; if not, adjust the adjustable feet and ensure its stable position.

Water connection

Be sure that the indoor plumbing is suitable for installing a dishwasher. Also, we recommend that you fit a filter at the entrance of your place or apartment so as to avoid any damage to your machine because of any contamination (sand, clay, rust etc.) that might be occasionally carried in through the mains water supply or the indoor plumbing, and to forestall such complaints as yellowing and formation of deposits after washing.

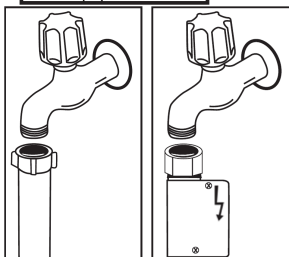


Water inlet hose

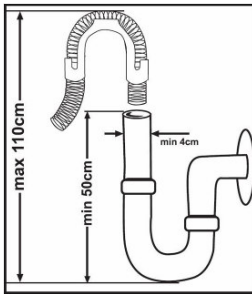
Do not use the water inlet hose of your old machine, if any. Use the new water inlet hose supplied with your machine instead. If you are going to connect a new or long-unused water inlet hose to your machine, run water through it for a while before making the connection. Connect the water inlet hose directly to the water inlet tap. The pressure supplied by the tap should be at a minimum of 0.03 Mpa and at a maximum of 1 Mpa. If the water pressure is above 1 Mpa, a pressure-relief valve should be fitted inbetween.

After the connections are made, the tap should be turned on fully and checked for water tightness.

For the safety of your machine, make sure to always turn off the water inlet tap after each wash programme is finished.



NOTE: Aquastop water spout is used in some models. In case of using Aquastop, a dangerous tension exists. Do not cut Aquastop water spout. Do not let it get folded or twisted.

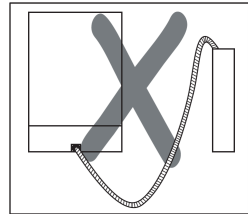
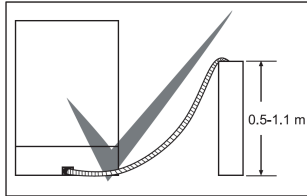


Water outlet hose

The water drain hose can be connected either directly to the water drain hole or to the sink outlet spigot. Using a special bent pipe (if available), the water can be drained directly into the sink via hooking the bent pipe over the edge of the sink.

This connection should be at a minimum of 50 cm and at a maximum of 110 cm from the floor plane.

Warning: When a drain hose longer than 4 m is used, the dishes might remain dirty. In that case, our company will not accept responsibility.



Electrical connection

The earthed plug of your machine should be connected to an earthed outlet supplied by suitable voltage and current. If there is no earthing installation, have a competent electrician carry out an earthing installation. In case of usage without earthing installed, our company will not be responsible for any loss of usage that might occur.

The indoor fuse current value should be 10-16 A.

Your machine is set according to 220-240 V. If the mains voltage in your location is 110 V, connect a transformer of 110/220 V and 3000 W inbetween. The machine should not be plugged in during positioning.

At low voltage, Wash efficiency of your machine decreases.

Always use the coated plug supplied with your machine.

The machine's electrical cable should be replaced by an authorised service or an authorised electrician only. Failure to do so may lead to accidents.

For safety purposes, always make sure to disconnect the plug when a wash programme is finished.

In order not to cause an electric shock, do not unplug when your hands are wet.

When disconnecting your machine from the mains supply, always pull from the plug. Never pull the cord itself.

Prior to using the machine for the first time

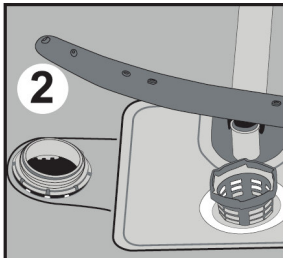
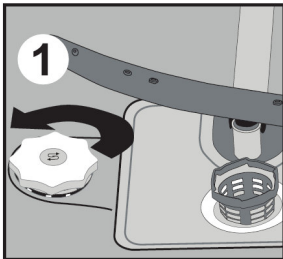
- Check whether the electricity and supply water specifications match the values indicated by the installation instructions for the machine.
- Remove all packaging materials inside the machine.
- Set the water softener.
- Add 1 kg salt into the salt compartment and fill with water up to a level at which it will almost overflow.
- Fill the rinse aid compartment.

PREPARING THE MACHINE FOR USE

The importance of water decalcification

For a good washing function, the dishwasher needs soft, i.e. less calcareous water. Otherwise, white lime residues will remain on the dishes and the interior equipment. This will negatively affect your machine's washing, drying and shining performance. When water flows through the softener system, the ions forming the hardness are removed from the water and the water reaches the softness required to obtain the best washing result. Depending on the level of hardness of the inflowing water, these ions that harden the water accumulate rapidly inside the softener system. Therefore, the softener system has to be refreshed so that it operates with the same performance also during the next wash. For this purpose, dishwasher salt is used.

Filling with salt

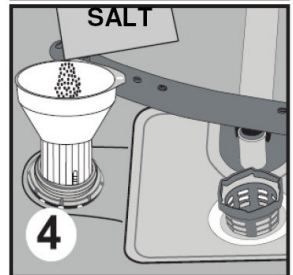
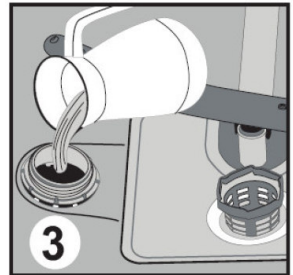


Use softener salt specifically produced for use in dishwashers. To put softener salt, first remove the lower basket and then open the salt compartment cap by turning it counter clockwise. **1** **2** At first use fill the compartment with 1 kg salt and water **3** at overflowing level. If available, using the funnel **4** provided will make filling easier. refit the cap, and close it. After every 20th-30th wash, add salt into your machine until it fills up (approx.1 kg) **Fill the salt compartment with water at first use only.** We recommend that you use smallgrained or powder softener salt.

Do not put table salt into your machine. Otherwise, the function of the softener compartment may decrease over time. When you start

your dishwasher, the salt compartment gets filled with water. Therefore, put the softener salt prior to starting your machine.

This way, overflowing salt gets immediately cleaned up through the wash operation. If you are not going to wash any dishes immediately after putting salt, then run a short washing program with an empty machine in order to avoid any damage (to prevent corrosion) to your machine due to the salt overflow while filling in the salt container.

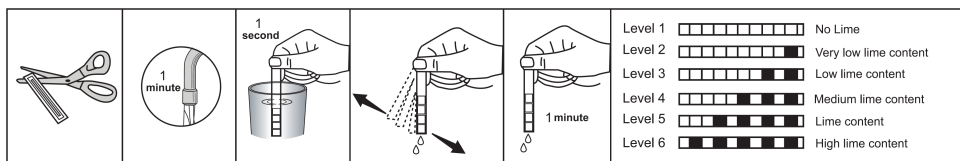


In order to understand whether or not the amount of softener salt in your machine is sufficient, check the transparent section on the salt compartment cap. There is sufficient salt if the transparent section is green. Salt has to be added if the transparent section is not green.

Testing strip

The washing effectiveness of your machine depends on the softness of the tap water. For this reason, your machine is equipped with a system that reduces the hardness in mains water supply. The washing effectiveness will increase when the system is correctly set. To find out the water hardness level of water in your area, contact your local water board or determine water hardness level by using the test strip(if available).

Open the testing strip.	Run water through your tap for 1 min.	Keep the testing strip in water for 1 sec.	Shake the testing strip after taking it out of water.	Wait for 1 min.	Make your machine's water hardness setting according to the result obtained through the testing strip.
-------------------------	---------------------------------------	--	---	-----------------	--



Adjusting salt consumption

Table of Water Hardness Level Settings

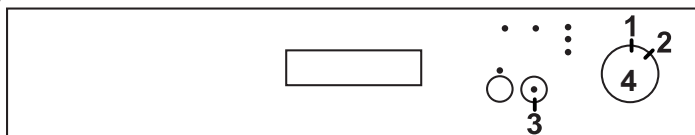
Water hardness degree	German hardness dH	French hardness dH	British hardness dH	Water hardness indicator
1	0-5	0-9	0-6	Wash light is on.
2	6-11	10-20	7-14	End light is on.
3	12-17	21-30	15-21	Start/Pause key is on.
4	18-22	31-40	22-28	Wash light is on. End light is on.
5	23-31	41-55	29-39	Wash light is on. Start/Pause key is on.
6.	32-50	56-90	40-63	End light is on. Start/Pause key is on.

If the hardness of the water you use is above 90 dF (French hardness) or if you are using well water; you are recommended to use filter and water refinement devices.

NOTE: Hardness level is adjusted to level 3 as a factory setting.

Adjusting salt consumption

In accordance with the degree defined on the test track, perform the water hardness setting of your machine as indicated below.



- Set the On/Off button (4) to off position (1).
- Press and hold Start/Pause (3) key.
- Set the On/Off button (4) to number 2 position by rotating it clockwise (rightward) 1 step.
- Hold your finger on the Start/Pause (3) key till all the lights flash and then the “water hardness degree indicator” predefined on your machine is displayed, (see setting table for water hardness degree).
- You can configure the settings according to the setting table for water hardness degree by pressing Start/Pause key (3).
- After selecting the water hardness degree, cut off the power of the machine by switching the On/Off button (4) to off position (1). The last selected water hardness setting will be stored in the memory.

Warning: In case of moving, to configure the water hardness setting according to the water hardness of the area you have moved is important for the effectiveness of washing.

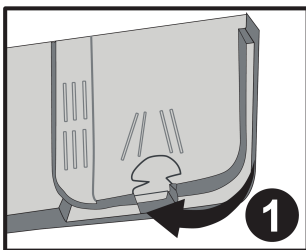
Detergent usage

Use a detergent specifically designed for use in domestic dishwashers. You can find powder, gel, and tablet detergents in the market that have been designed for household dishwashers.

Detergent should be put into the compartment prior to starting the machine. Keep your detergents in cool, dry places out of reach of your children.

Do not fill detergent into the detergent compartment more than required; otherwise it may cause scratches on your glasses as well as lead to a poorly dissolved detergent.

Should you need more information concerning the detergent you will use, contact detergent manufacturers directly.



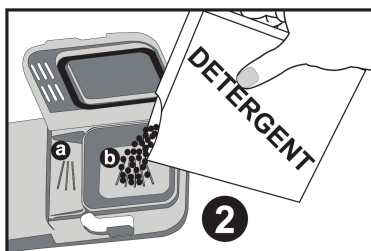
Filling the detergent compartment

Push the latch to open the detergent container as shown in the image. Detergent pod has level lines inside. It is possible to measure the right detergent amount using these lines. Detergent pod can take totally 40 cm³ detergent.

Open the dishwasher detergent and pour into the larger compartment **a** 25 cm³ if your dishes are heavily soiled or 15

cm³ if they are less soiled. **2** If your dishes have been kept dirty for a very long time, if there are dried food wastes on them, and if you have overly loaded the dishwasher, pour **a** 5cm³ detergent into the pre-wash compartment and start your machine.

You may have to add more detergent into your machine, depending on the degree of soil and on the water hardness level in your area.



Combined detergents

Detergent manufacturers also manufacture combined detergents that are called 2 in 1 – 3 in 1- 5 in 1...

The 2 in 1 detergents contain detergent+ salt **or** rinse aid . While using the 2 in 1 detergents, it should be observed which functions the tablet consists of.

The other tablet detergents also have detergent+rinse aid +salt+various extra functions.

Generally, combined detergents produce sufficient results under certain usage conditions only. Such detergents contain rinse aid and/or salt in preset amounts.

Points to consider when using this type of products:

- Always make sure to check the specifications of the product you will use or whether or not it is a combined product.
- Check if the detergent used is appropriate for the hardness of mains water that machine is pertaining to.
- Observe the instructions on packagings when using such products.
- If such detergents are in the form of tablets, never put them into the interior section or the cutlery basket of the dishwasher. Always put the tablets into the detergent compartment in the detergent dispenser.

- They produce good results for certain types of usage only. If you are using this type of detergents, you need to contact the manufacturers and find out about the suitable conditions of use.
- When the conditions of use of such products and the machine settings are appropriate, they ensure savings in salt and/or rinse aid consumption.
- Contact the detergent manufacturers if you are not obtaining good wash results (if your dishes stay calcareous and wet) after having used 2 in 1 or 3 in 1 detergents. The scope of warranty for your machine does not cover any complaints caused by the use of these types of detergents.

Recommended usage: If you want to obtain better results while using combined detergents, add salt and rinse aid into your machine and adjust the water hardness setting and the rinse aid setting to the lowest position.



Solubility of the tablet detergents produced by different companies can vary depending on the temperature and time. Therefore, it is not recommended to use such detergents in short programs. It is more suitable to use powder detergents in such programs.

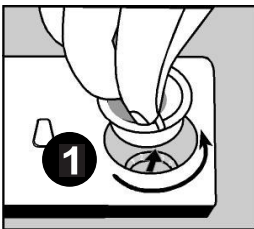
Warning: Should any problem, which you have not encountered before, arise with the use of this type of detergents, contact the detergent manufacturers directly.

When you give up using combined detergents

- Fill the salt and rinse aid compartments.
- Adjust the water hardness setting to the highest position and run an empty-wash.
- Adjust the water hardness level.
- Make the suitable rinse aid setting.

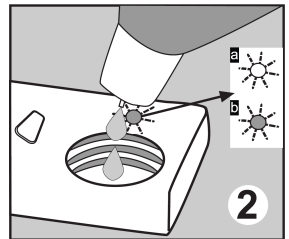
Filling with rinse aid and making the setting.

Rinse aid is used to prevent the stay of white water drops, lime stains, white film strip-shaped stains that may form on the dishes, as well as to increase the drying performance. Contrary to the popular beliefs, it is used not only for obtaining shinier dishes but also for obtaining sufficiently dried dishes. For this reason, care should be taken that there is adequate amount of rinse aid in the rinse aid compartment and only polishing material produced for use at dishwashers should be used.

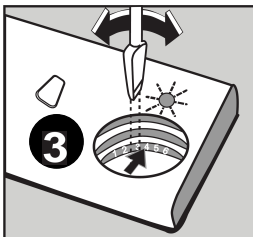


To put rinse aid, remove the rinse aid compartment cap by turning it. Fill the rinse aid compartment with rinse aid until the rinse aid level indicator becomes dark;

refit the cap and close it by turning it in a way that the nails will correspond to one another. By checking the rinse aid level indicator on the detergent dispenser, you can understand whether or not your machine needs rinse aid. A dark indicator **5** means that there is rinse aid in the compartment, while a light indicator **6** shows that you need to fill the compartment with rinse aid.



The rinse aid level adjuster can be set to a position between 1 and 6. Factory setting for rinse aid is the position 3.



You need to increase the degree of the adjuster if water stains form on your dishes after a wash, whereas you need to decrease the degree if a blue stain is left when wiped by hand.

Warning: Use only those rinse aid materials which are allowed for use in the machine. As rinse aid residues left as a result of overflowing will create extremely high amounts of foam and thus reduce the washing performance, remove the excess amount of rinse aid by wiping it with a rag.

LOADING YOUR DISHWASHER

If you properly place your dishes into the machine, you will be using it in the best way in terms of energy consumption, washing and drying performance.

There are two separate baskets for you to load your dishes into your machine. You can load into the lower basket such round and deep items as pots with long handles, pot lids, plates, salad plates, cutlery sets.

The upper basket has been designed for tea plates, dessert plates, salad bowls, cups and glasses. When placing long-stem glasses and goblets, lean them against the basket edge, rack or glass supporter wire and not against other items. Do not lean long glasses against one another or they cannot remain steady and may receive damage.

It is more appropriate to locate the thin narrow parts into the middle sections of baskets.

You can place spoons among the other cutlery sets in order to prevent them from sticking to one another. You are recommended to use the cutlery grid in order to obtain the best result.

To avoid any possible injuries, always place such long-handle and sharp-pointed dishes as serving fork, bread knife etc. with their sharp points facing down or horizontally on the baskets.

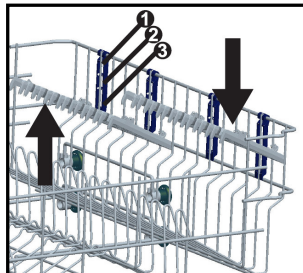
Warning: Place your dishes into your machine in a way that they will not prevent the upper and lower spray arms from spinning.

Top basket

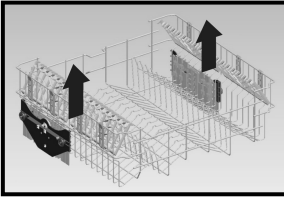
Height Adjustable Rack

These racks are designed to increase the capacity of the top basket. You can place your glasses and cups on the racks. You can adjust the height of these racks. Thanks to this feature, you can place different sizes of glasses under these racks.

Thanks to height adjustment plastics mounted on the basket, you can use your racks in 3 different heights. In addition, you can place long forks, knives and spoons on these racks laterally, so that they do not block the revolution of propeller.



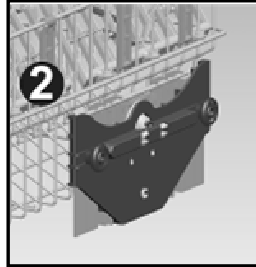
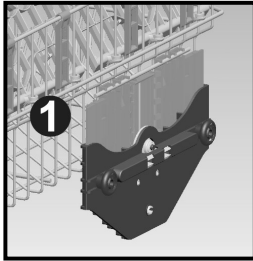
Top basket height adjustment while it is full



Machine is designed to let you adjust the height of your top basket upwards or downwards, without removing it from your machine when it is full, and create large spaces at the top or bottom area of your machine as needed. Basket of your machine is set to upper position in factory settings.

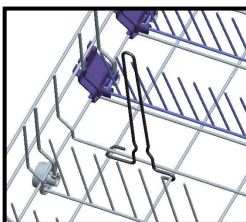
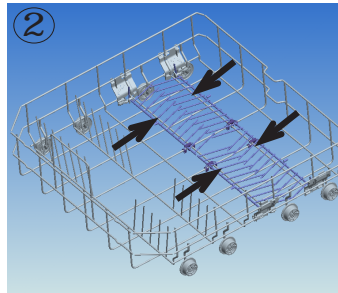
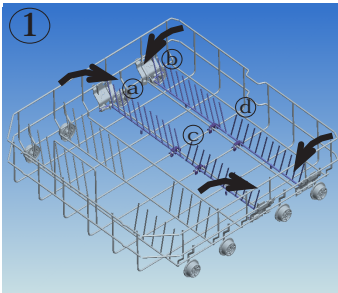
In order to raise your basket, hold it from both sides and pull it upwards. In order to lower it, hold it from both sides again, and leave it.

In loaded basket adjustment mechanism, make sure that both sides are in the same position (up or down).



Lower Basket Folding Racks

Folding racks consisting of four parts that are located on the lower basket of your machine are designed in order to let you place big items easier such as pots, pans, etc. If requested, each part can be folded separately, or all of them can be folded and larger spaces can be obtained. You can use folding racks by raising them upwards, or by folding.

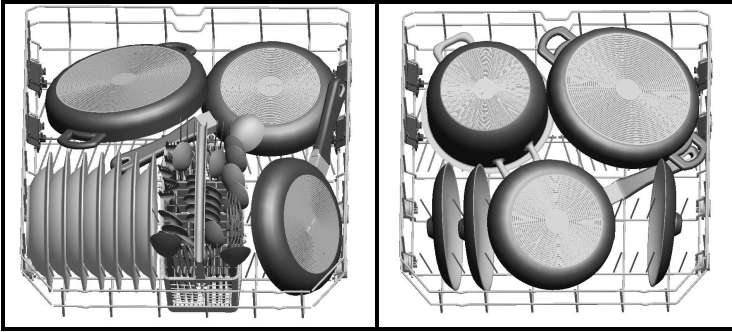


Bottle Rack

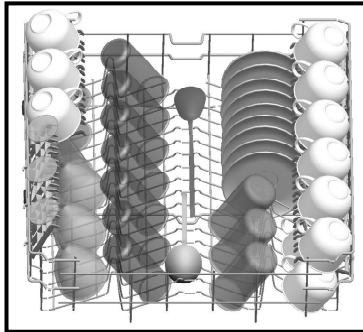
Bottle rack is designed to let you wash items with large openings and higher items easier. You can pull out bottle rack in the direction of the arrow as shown on the picture when you do not use it.

Alternative basket loads

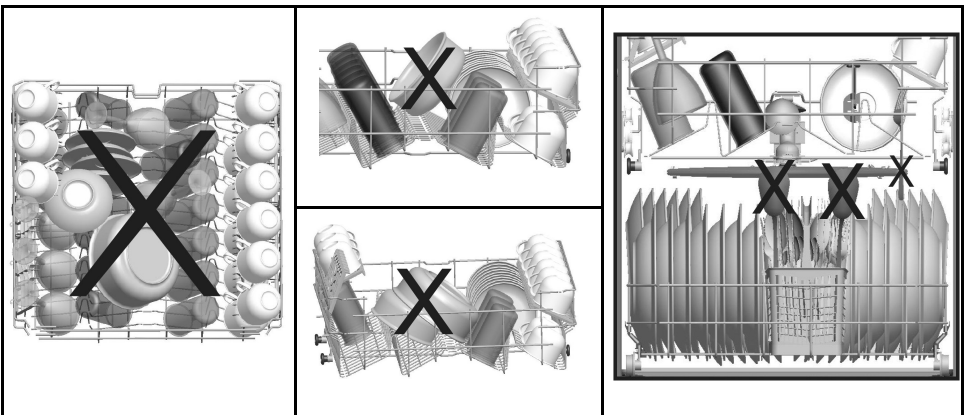
Lower Basket



Top basket



Faulty loads



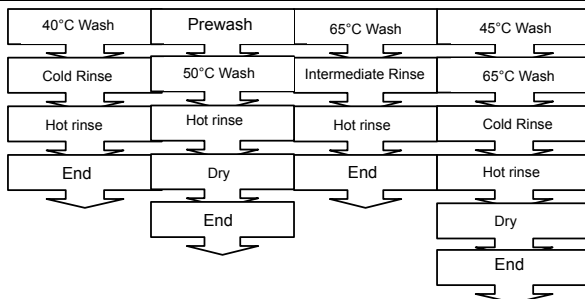
Important Note for Test Laboratories

For detailed information on performance tests, please contact following address: "dishwasher@standardtest.info". In your email, please provide the model name and serial number (20 digits) which you can find on the appliance door.

PROGRAMME DESCRIPTIONS

Programme items

Programme No		Reference		
Programme names	Quick 30 min.	Eco	Super 50 min.	Intensive
Temperatures	40°C	50°C	65°C	65°C
Type of food waste	coffee, milk, tea, cold meats, vegetables, not kept for long	coffee, milk, tea, cold meats, vegetables, not kept for long	soups, sauces, pasta, eggs, pilaf, potato and oven dishes, fried foods	soups, sauces, pasta, eggs, pilaf, potato and oven dishes, fried foods
Level of soil	small	medium	medium	high
Detergent amount B: 25 cm ³ / 15 cm ³ A: 5 cm ³	B	A+B	A+B	A+B



Programme duration (min.)	30	165	50	117
Electricity consumption (kW hours)	0,90	0,90	1,35	1,61
Water consumption (liters)	12,4	12,0	12,7	17,2

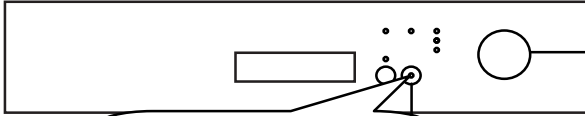
If the half load button is used, the values will be as follows:

Programme duration (min.)	30	145	46	96
Electricity consumption (kW hours)	0,90	0,87	1,22	1,40
Water consumption (liters)	12,4	12,0	12,7	12,2

Warning: Short programmes do not include a drying step

The values declared above are the values obtained under laboratory conditions according to relevant standards. These values can change depending on conditions of product's use and environment (network tension, water pressure, water input temperature and environment temperature).

Operating the Machine

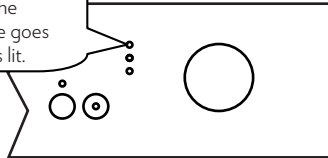


1. By rotating the programme selection button, energise the machine and select the suitable programme.

After rotating the programme selection button and energising the machine, the light on the Start/Pause is lit.

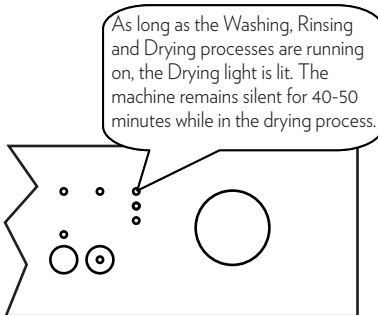
2. Start the programme by pressing the Start/Pause key.

At the very time the programme is started the light on the Start/Pause goes off and Washing light is lit.

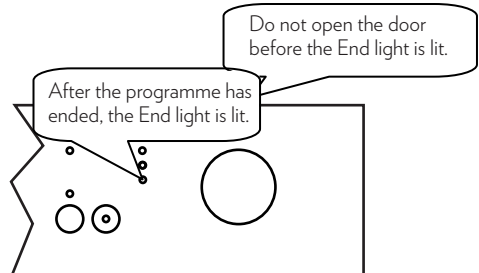


Programme Monitoring

You can monitor the programme flow with the programme lights on the control panel.



As long as the Washing, Rinsing and Drying processes are running on, the Drying light is lit. The machine remains silent for 40-50 minutes while in the drying process.

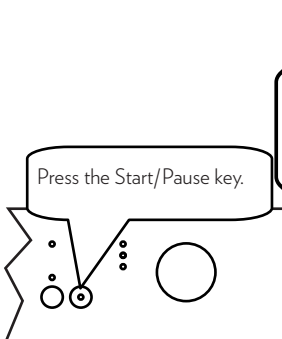


Do not open the door before the End light is lit.

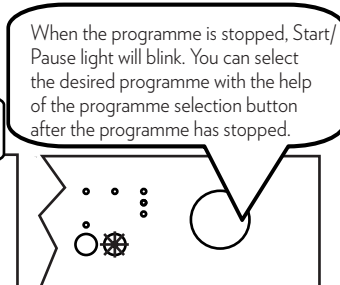
After the programme has ended, the End light is lit.

Changing the Programme

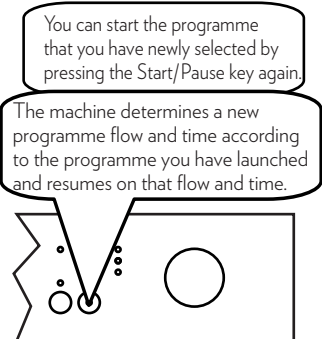
If you would like change a programme while a washing programme is running on:



Press the Start/Pause key.



When the programme is stopped, Start/ Pause light will blink. You can select the desired programme with the help of the programme selection button after the programme has stopped.

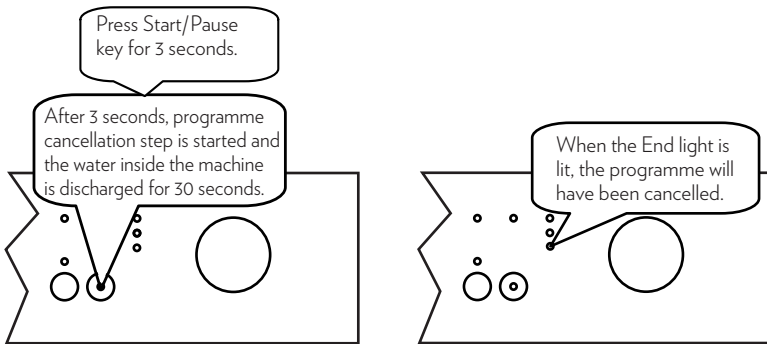


You can start the programme that you have newly selected by pressing the Start/ Pause key again.

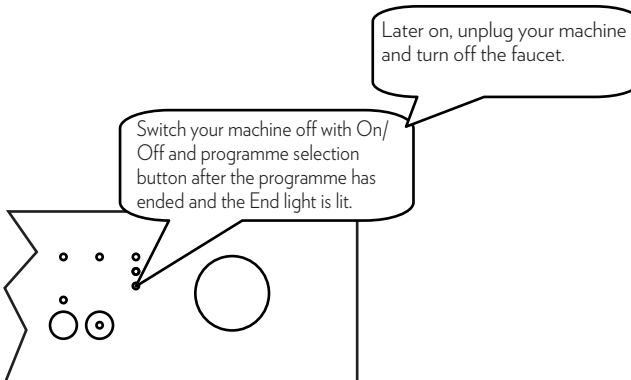
The machine determines a new programme flow and time according to the programme you have launched and resumes on that flow and time.

Cancelling the Programme

If you would like cancel a programme while a washing programme is running on:



Switching the Machine Off



NOTE: In order for the drying process to be performed more quickly, you may slightly open the machine door after few minutes when the programme has ended and the End light has been lit.

NOTE: The washing programme resumes on where it has left if the machine door is opened and then closed or if the machine power is cut off and then supplied during the washing process.

NOTE: If the power is interrupted or if the machine door is opened and then closed during the drying process, the programme is terminated. And your machine becomes ready for the new programme selection.

MAINTENANCE AND CLEANING

Cleaning the machine in regular intervals prolongs the machine's service life.

Oil and lime may accumulate in the machine's washing section. In case of such accumulation;

-Fill the detergent compartment without loading any dishes into the machine, select a programme that runs at high temperature, and start the machine. In case of insufficiency, use special cleansing material available in the market. (Cleansing material produced special to machines by detergent producers.)

Cleaning the seals in the machine door,

-To clean any accumulated residues in the door seals, wipe the seals regularly by using a dampened cloth.

Cleaning machine,

Clean the filters and spray arms at least once a month.

Unplug your machine and turn off its tap before starting the cleaning.

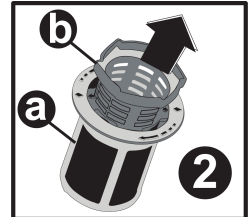
Do not use hard materials when cleaning your machine. Wipe with a fine cleaning material and a dampened cloth.

Filters

Check if any food wastes have remained on the coarse and fine filters.

If any food wastes are left, remove the filters and clean them thoroughly under the water tap.

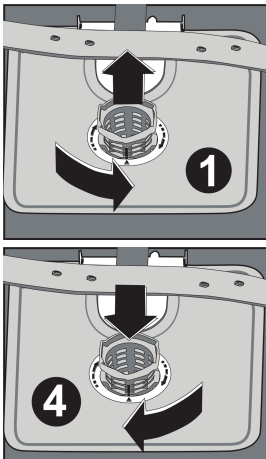
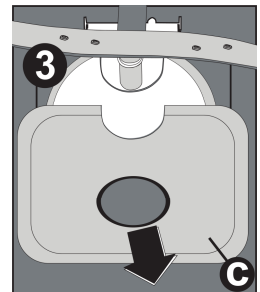
- a. Micro Filter
- b. Coarse Filter
- c. Metal/Plastic Filter



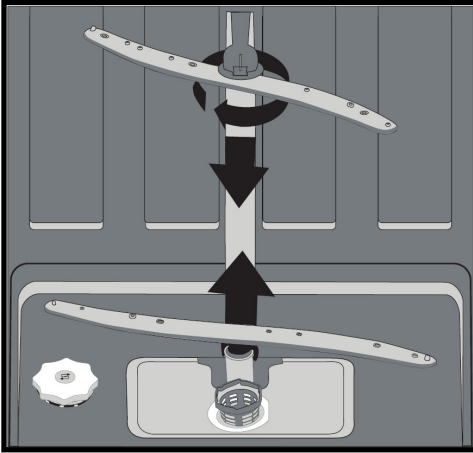
To remove and clean the filter combination, turn it counter clockwise and take it out by lifting upwards. **1**

Pull and remove the metal/plastic filter. **3**
Then pull the coarse filter out of the micro filter. **2** Rinse it with lots of water under the tap. Refit the metal/plastic filter. Insert the coarse filter into the micro filter in a way that the marks will correspond to one another.

Attach micro filter into the metal/plastic filter and turn to the direction of arrow and it is locked when the arrow on micro filter can be seen from across. **4**



- Never use your dishwasher without any filter.
- Incorrect fitting of the filter will reduce the washing effectiveness.
- Clean filters are very important in terms of the proper running of the machine.



Spray arms












Check whether or not the holes for the upper and lower spray arms are clogged. If there is any clogging, remove the spray arms and clean them under water.

You can remove the lower spray arm by pulling it upwards, while the upper spray arm nut can be removed by turning the nut to the left. Be sure that the nut is perfectly tightened when refitting the upper spray arm.

Hose filter

Water is prevented by the inlet hose filter so as to avoid any damage to your machine because of any contamination (sand, clay, rust etc.) that might be occasionally carried in through the mains water supply or the indoor plumbing, and to forestall such complaints as yellowing and formation of deposits after washing. Check the filter and the hose from time to time and clean them if necessary. To clean the filter, first turn off your tap and then remove the hose. After removing the filter from the hose, clean it under the tap. Insert the cleaned filter back into its place inside the hose. Refit the hose.

FAILURE CODES AND WHAT TO DO IN CASE OF FAILURE

ERROR CODE			ERROR DESCRIPTION	CONTROL
Wash	End	Start/ Pause		
			Inadequate water supply	<ul style="list-style-type: none"> • Make sure the water input tap is totally open and that there is no water cut. • Close the water input tap, separate the water input hose from the tap and clean the filter at the connection end of the hose. • Restart your machine, contact the service if the error resumes
			Error of continuous water input	<ul style="list-style-type: none"> • Close the tap. • Contact the service.
			The waste water in the machine cannot be discharged.	<ul style="list-style-type: none"> • Water discharge hose is clogged. • The filters of your machine might be clogged. • Power off-on your machine and activate the program cancellation command. • If the error continues, contact the service.
			Intended water temperature could not be reached faulty heater and heater sensor	<ul style="list-style-type: none"> • Contact the service.
			Alarm is active against water overflow	<ul style="list-style-type: none"> • Power off your machine and close the tap. • Contact the service.
			Faulty electronic card	<ul style="list-style-type: none"> • Contact the service.

If one of program monitor lights is on and start/Pause light is on and off,
Your machine's door is open, shut the door.

If the programme won't start

- Check if the plug is connected.
- Check your indoor fuses.
- Be sure that the water inlet tap is turned on.
- Be sure that you have closed the machine door.
- Be sure that you switched off the machine by pressing the Power On / Off button.
- Be sure that the water inlet filter and the machine filters are not clogged.

If the lamps "Wash" and "End" keep flashing

- Water overflow alarm is active
- Turn off your tap and contact an authorised service.

If the control lamps won't go out after a wash operation

The *Power On/Off* button is released yet.

If detergent residues are left in the detergent compartment

Detergent has been added when the detergent compartment was wet.

If water is left inside the machine at the end of the programme

- The water drain hose is clogged or twisted.
- The filters are clogged.
- The programme is not finished yet.

If the machine stops during a wash operation

- Power failure.
- Water inlet failure.
- Program can be on standby mode.

If shaking and hitting noises are heard during a wash operation

- Dishes placed incorrectly.
- Spray arm hitting the dishes.

If there are partial food wastes left on the dishes

- Dishes placed incorrectly into the machine, sprayed water did not reach related places.
- Basket overly loaded.
- Dishes leaning against one another.
- Very small amount of detergent added.
- An unsuitable, rather weak wash programme selected.
- Spray arm clogged with food wastes.
- Filters clogged.
- Filters incorrectly fitted.
- Water drain pump clogged.

If there are whitish stains on the dishes

- A very small amount of detergent is being used.
- Rinse aid dosage setting at a very low level.
- No special salt is being used despite the high degree of water hardness.
- Water softener system setting is at a very low level.
- Salt compartment cap not closed well.

If the dishes won't dry up

- A programme without a dry operation selected.
- Rinse aid dosage set too low
- Dishes unloaded too fast.

If there are rust stains on the dishes

- Stainless-steel quality of the dishes washed is insufficient.
- High rate of salt in the wash water.
- Salt compartment cap not closed well.
- Too much salt spilt into the sides and into the machine while filling it with salt.
- Unhealthy mains grounding.

Call an authorised service if the problem still persists after the controls or in case of any malfunction not described above.

PRACTICAL AND USEFUL INFORMATION

1. Whenever you will not be operating your machine
 - Unplug the machine and then turn the water off.
 - Leave the door slightly ajar in order to prevent the formation of unpleasant smells.
 - Keep the machine interior clean.
2. Eliminating water droplets
 - Wash the dishes with the intensive programme.
 - Take all of the metal containers in the machine out.
 - Do not add detergent.
3. If you properly place your dishes into the machine, you will be using it in the best way in terms of energy consumption, washing and drying performance.
4. Clean all rough waste before you place dirty dishes to the machine.
5. Operate the machine after it is completely full.
6. Use pre-washing program only when necessary.
7. Observe program information and average consumption values table when selecting a program.
8. Since the machine will reach high temperatures, it should not be mounted near refrigerator.
9. If the appliance is located in a place where the risk of freezing exists, you must completely drain the water that has remained in the machine. Turn off the water tap, disconnect the water inlet hose from the tap and allow the interior water to drain.

Sheet of household dishwasher according to EU Directive 1059/2010:

Manufacturer	Amica Wronki S.A.
Type	ZZV 634W UK
Standard place settings	12
Energy efficiency class ¹	A++
Annual energy consumption - kWh (AEC) (280 cycles) ²	258
Energy consumption of the standard cleaning cycle	0,90
Power consumption of off-mode (W)	0,50 W
Power consumption of left-on mode (W)	1,00 W
Annual water consumption (280 cycles) ³	3360
Drying efficiency class ⁴	A
Standard cleaning cycle ⁵	Eco 50
Program duration of the standard cleaning cycle (min)	165
Noise level dB (A)	47
Mounting	Yes / Build under
Height	820 mm
Height (without top cover)	-
Width	598 mm
Depth	570 mm
Rated voltage / frequency	220-240 V / ~ 50 Hz / 10A
Water pressure (flow pressure)	0.03 MPa (0,3 bar) - 1 MPa (10 bar)
Power consumption	1900 W
Healter power	1800 W
Wash pump power	85 W
Drain pump power	57,5 W
Net weight	41 kg

1. A + + + (highest efficiency) to D (lowest efficiency)

2. Energy consumption ~258 kWh per year, based on 280 standard cleaning cycles using cold water fill and

the consumption of the low power modes. Actual energy consumption will depend on how the appliance is used

3. Water consumption ~3360 litres per year, based on 280 standard cleaning cycles. Actual water consumption will depend on how the appliance is used.

4. A (highest efficiency) to G (lowest efficiency)

5. This program is suitable for cleaning soiled normally soiled tableware and that it is the most efficient programme in terms of its combined energy and water consumption for that type of tableware.

Conformity with the standards and Test data / EU Declaration of Conformity

This product meets the requirements of all applicable EU directives with the corresponding harmonised standards, which provide for CE marking.

The above values have been measured in accordance with standards under specified operating conditions.

Results may vary greatly according to quantity and pollution of the dishes, water hardness, amount of detergent, etc.

The manual is based on the European Union's standards and rules.

Amica

 Service Help Line

For the UK: please call **0844 815 8880**

For Ireland: please call **0818 46 46 46**